

S&P Computersysteme GMBH

Leinfelden-Echterdingen

AERA STRUCTURE 

Only a stone's throw away from the Stuttgart Airport and Messe Stuttgart, S&P Computersysteme GmbH in Leinfelden-Echterdingen develops sophisticated IT solutions for logistics and warehouse management. It's a place where everyday activities revolve around bits & bytes and processes and structures. A carpet like AERA STRUCTURE fits perfectly into the company's interior design concept, not just because of its name, but primarily because of the way it looks.

Leinfelden-Echterding's excellent infrastructure and attractive location near the trade fair and airport make it one of the most popular business and commercial locations in the Stuttgart metropolitan area. Numerous medium-sized companies as well as global players are headquartered here, some of which are well known far beyond the borders of the district town with around 40,000 inhabitants.

One such company is S&P Computersysteme GmbH. It has been developing customised software solutions and turn-key systems that are specifically tailored to individual customer needs since 1985. Warehouse management and in-house logistics are its main areas of focus, and its customers include renowned companies from a wide range of industries.

The IT specialist's headquarters is located in the Leinfelden-Echterdingen industrial park on Max-Lang-Strasse.

Around 80 employees work here in modern, light-flooded offices spread over several levels of the building, which was constructed at the end of the 1970s. One of its most striking features is the successful contrast of light and dark, which is also reflected in the design of the wall and floor surfaces and in the choice of furniture. A perfect environment for AERA STRUCTURE from ANKER, which blends in perfectly with the interior design. The tufted carpet's luxurious shades of grey (colour no. 902) elegantly accentuate the interplay of the different materials and skilfully rounds off the interior concept's overall design, which S&P developed.

ANKER



Object telegram

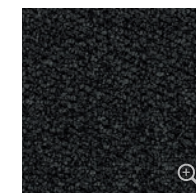
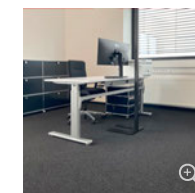
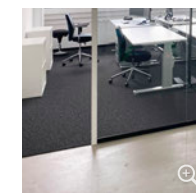
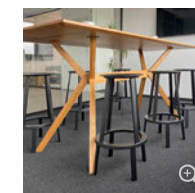
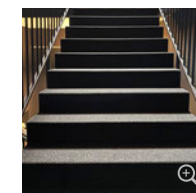
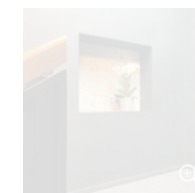
**S&P Computersysteme GmbH,
Leinfelden-Echterdingen**

Building area
approx. 1,050 m²

Interior concept
S&P Computersysteme GmbH in
cooperation with DY-Architekten

ANKER carpet
AERA STRUCTURE (colour 902),
approx. 1,150 m²

Floor installer
Udo Reisinger,
Leinfelden-Echterdingen



ANKER



Object telegram

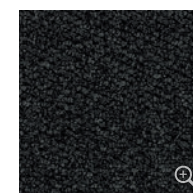
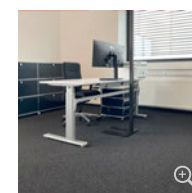
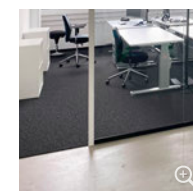
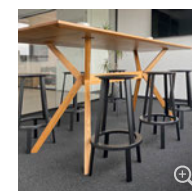
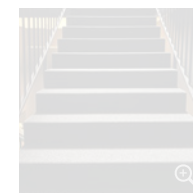
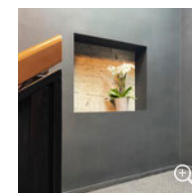
**S&P Computersysteme GmbH,
Leinfelden-Echterdingen**

Building area
approx. 1,050 m²

Interior concept
S&P Computersysteme GmbH in
cooperation with DY-Architekten

ANKER carpet
AERA STRUCTURE (colour 902),
approx. 1,150 m²

Floor installer
Udo Reisinger,
Leinfelden-Echterdingen



Successful contrast of light and dark, which is also reflected in the design of the wall and floor surfaces.

ANKER



Object telegram

**S&P Computersysteme GmbH,
Leinfelden-Echterdingen**

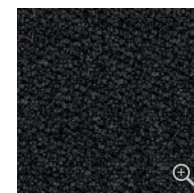
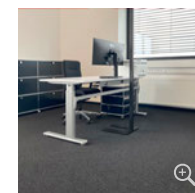
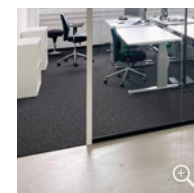
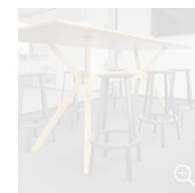
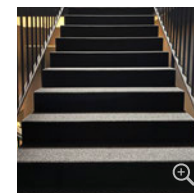
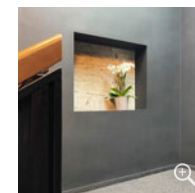
Building area
approx. 1,050 m²

Interior concept
S&P Computersysteme GmbH
in cooperation with DY-Architekten

ANKER carpet
AERA STRUCTURE (colour 902),
approx. 1,150 m²

Floor installer
Udo Reisinger,
Leinfelden-Echterdingen

The interplay of the various materials rounds off the interior concept's overall appearance.





Object telegram

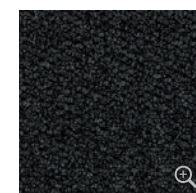
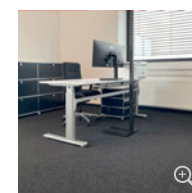
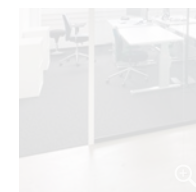
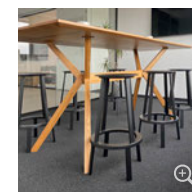
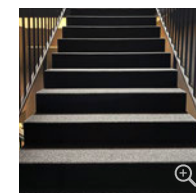
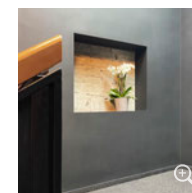
**S&P Computersysteme GmbH,
Leinfelden-Echterdingen**

Building area
approx. 1,050 m²

Interior concept
S&P Computersysteme GmbH in
cooperation with DY-Architekten

ANKER carpet
AERA STRUCTURE (colour 902),
approx. 1,150 m²

Floor installer
Udo Reisinger,
Leinfelden-Echterdingen



AERA STRUCTURE integrates perfectly into
S&P Computersysteme GmbH's interior design.



Object telegram

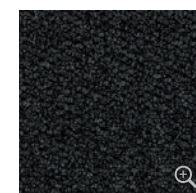
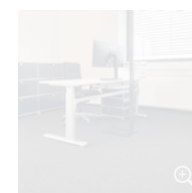
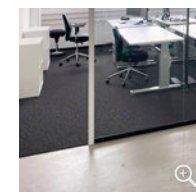
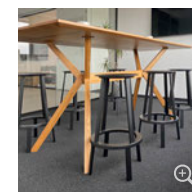
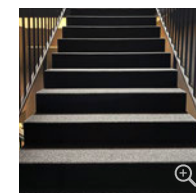
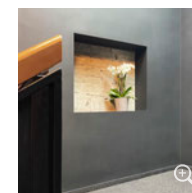
**S&P Computersysteme GmbH,
Leinfelden-Echterdingen**

Building area
approx. 1,050 m²

Interior concept
S&P Computersysteme GmbH in
cooperation with DY-Architekten

ANKER carpet
AERA STRUCTURE (colour 902),
approx. 1,150 m²

Floor installer
Udo Reisinger,
Leinfelden-Echterdingen



AERA STRUCTURE
tufted carpet made out of resource-efficient ECONYL® fibre.

ANKER



Object telegram

**S&P Computersysteme GmbH,
Leinfelden-Echterdingen**

Building area

approx. 1,050 m²

Interior concept

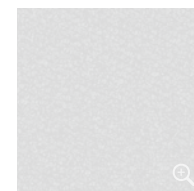
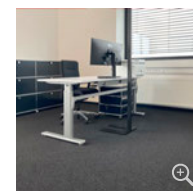
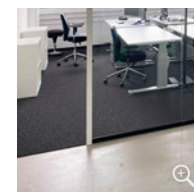
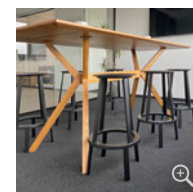
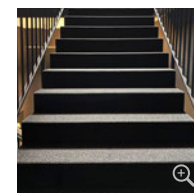
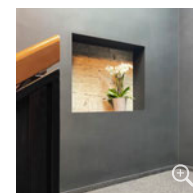
S&P Computersysteme GmbH in
cooperation with DY-Architekten

ANKER carpet

AERA STRUCTURE (colour 902),
approx. 1,150 m²

Floor installer

Udo Reisinger,
Leinfelden-Echterdingen



AERA STRUCTURE (colour 902)

Available as rolls (400 cm wide) or tiles (AERA STRUCTURE SYSTEM 50x50 cm).